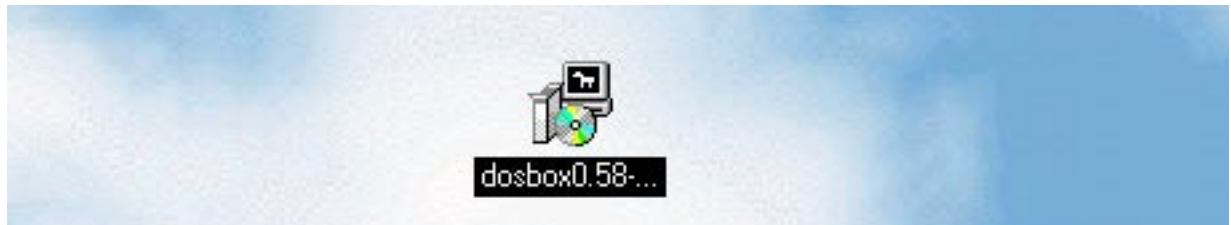


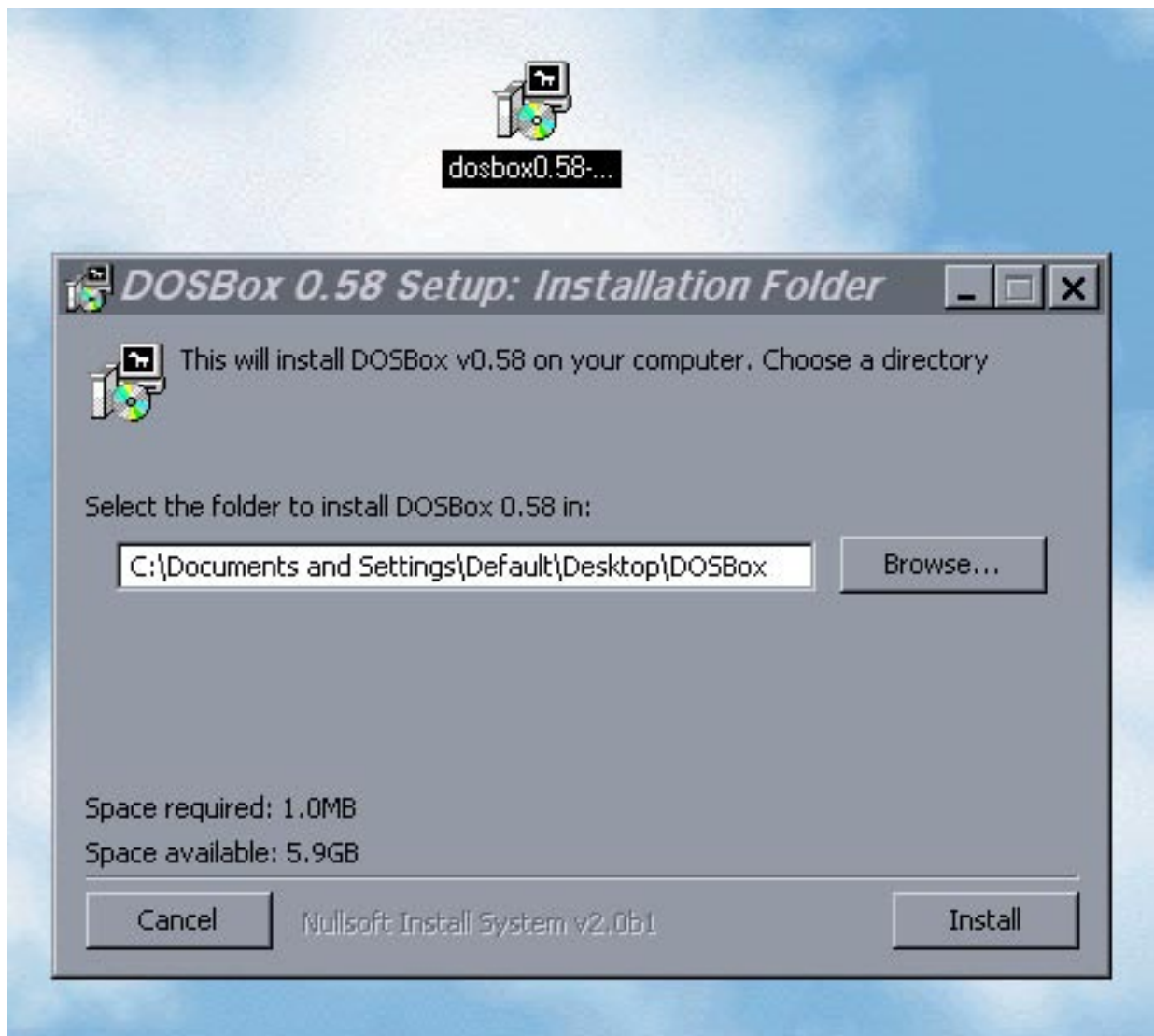
HOW TO USE SIGNWRITER DOS ON WINDOWS XP

1. DOWNLOAD a free program called "DOSBox"... Go to this web page to download:

<http://prdownloads.sourceforge.net/dosbox/dosbox0.58-win32-installer.exe?download>



2. DE-COMPRESS the DOBox program, placing the DOSBox folder on your desktop:



3. You now have a folder called DOSBox on your desktop:



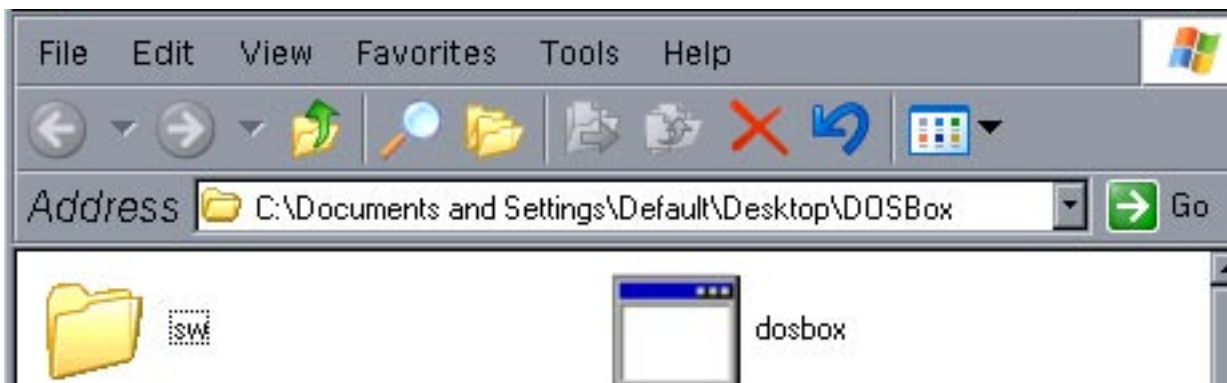
4. Find the SIGNWRITER DOS folder. It must be named "sw". Place it on your desktop:



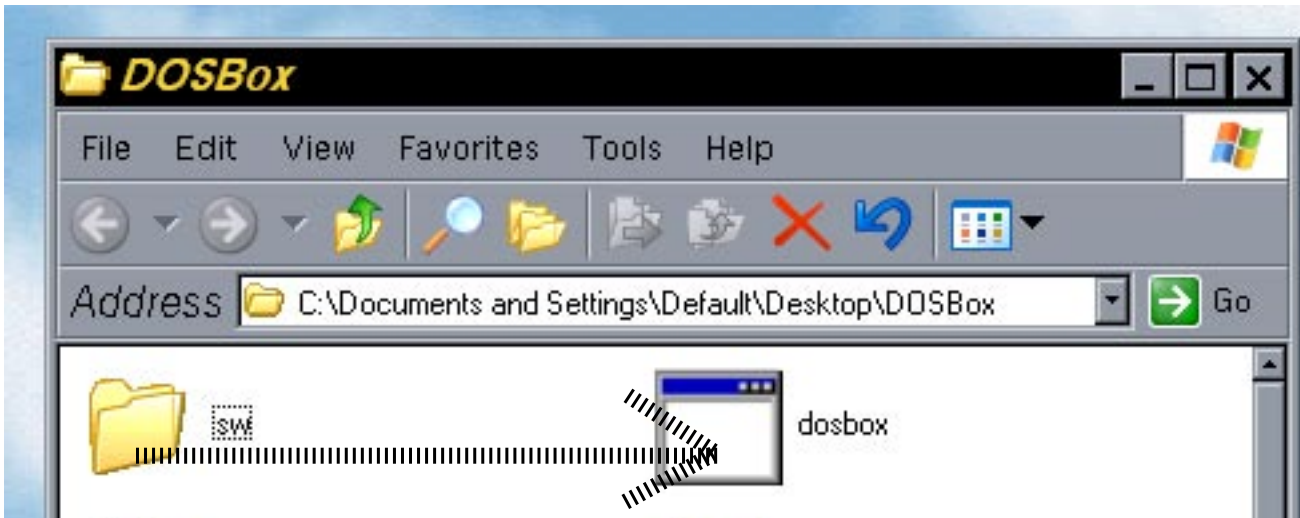
5. DRAG the sw folder ON TOP of the DOSBox folder. This will place the sw folder inside the DOSBox folder:



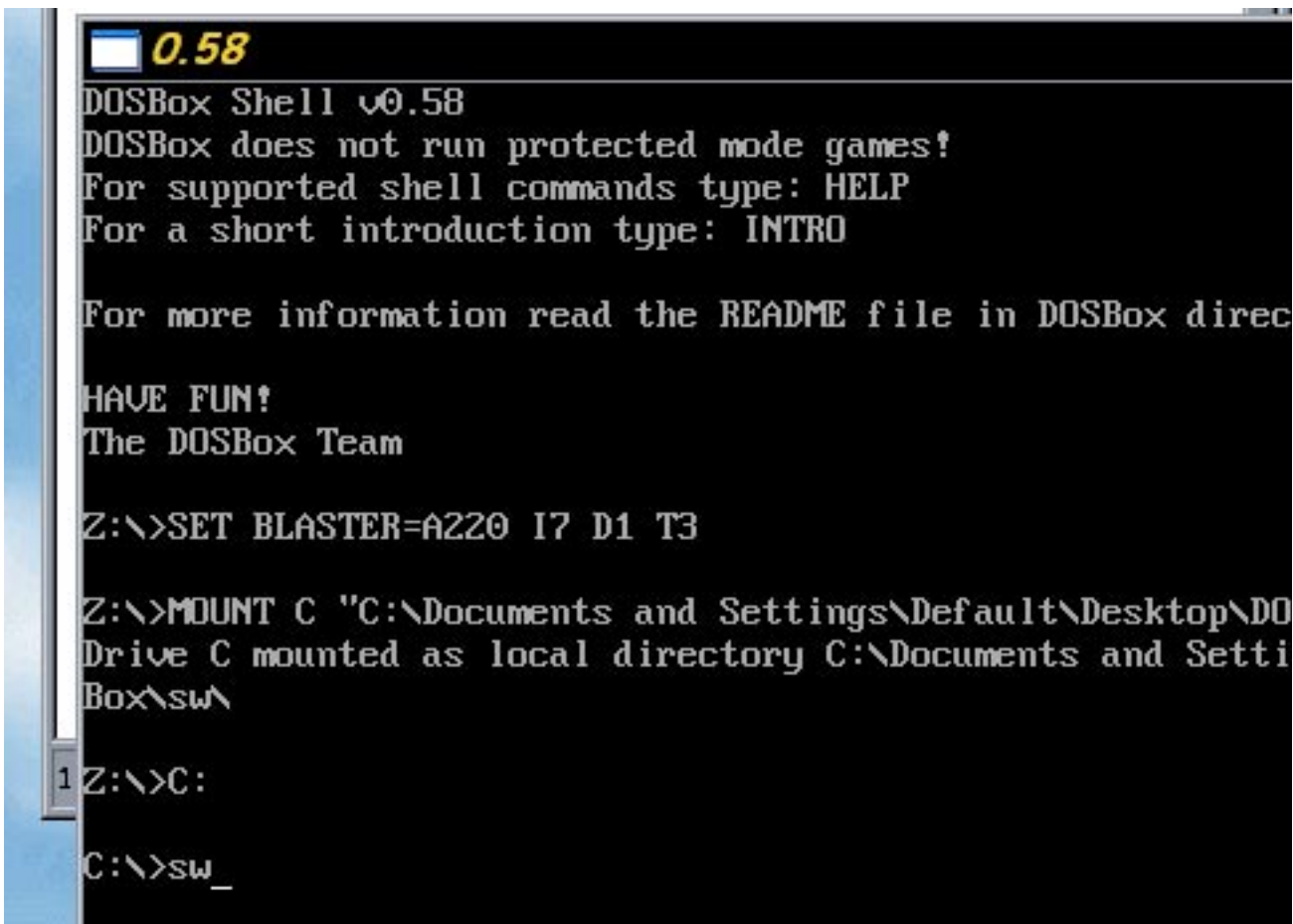
6. Open the DOSBox folder. You should see the sw folder there...



7. DRAG THE SW FOLDER on top of the icon for DOSBox:



8. DOSBox will open...



9. At the C:\> prompt, type sw, and they press the Return or Enter key...

10. SignWriter should start:



11. ONLY one file will be visible in the File Box. In the above diagram, only the file “deaf1” is listed. But actually there are a lot more files available....Unfortunately, DOSBox can only list one at a time...So how can you see the other files that are available?...

12. To see all the files available, use Windows Explorer to see a listing of all the files in the sw folder.

13. Then use the Open Command, in SignWriter, to open those files.